

# VVTA RFP 2021-06 LANDSCAPE SERVICES ADDENDUM NO. 3

Thursday, February 25, 2021

This addendum is provided to all known prospective proposers for clarification of the subject Request for Proposal (RFP).

The City of Barstow has requested that VVTA provide some Landscape maintenance to VVTA's Barstow LCNG station at 100 Sandstone Court, Barstow, CA 92311. Pictures from the location are also included with this addendum. Please see Exhibit 1. Please use the following to submit pricing for the Barstow location.

## **BARSTOW LCNG STATION**

Line 1 – Cost for plants, either new or replacement of dead, diseased, and not desert friendly plants. Replacement plants need to be low maintenance desert landscaping and could include decorative rocks and gravel consistent with the Barstow Maintenance Facility plan (see property next door).

Line 2 – Labor for the plantings

Line 3 – Tree Trimming recommendations and Labor

Line 4 – Assessment of sprinkler functions at the LCNG Station for proper operation.

<b>Line No.</b>	<b>Description</b>	<b>Total</b>
<b>1</b>	<b>Cost of plants</b>	
<b>2</b>	<b>Labor for removal of dead plants, weeds, non-desert and diseased plants and new plantings</b>	
<b>3</b>	<b>Tree Trimming Labor</b>	
<b>4</b>	<b>Assessment of Sprinklers for proper operation and functionality.</b>	
	<b>LCNG STATION PROJECT TOTAL:</b>	

# VVTA RFP 2021-06 LANDSCAPE SERVICES

## ADDENDUM NO. 3

**For the Hesperia Location:** Staff is including the previous landscaping plans – these plans include the original pattern for the plantings and irrigation to give Proposers and idea of what the original project looked like. See Exhibit 2.

**Pre-Proposal Conference/Job Walk Sign in Sheets:** Are attached as Exhibit 3.

All other terms and conditions of the RFP remain the same.

As stated in the RFP, all addenda must be acknowledged. Please use Attachment E of the RFP to acknowledge receipt of this addendum. Failure to acknowledge any addenda to this RFP may be cause to deem Bidder "Non-Responsive."

# EXHIBIT 1





















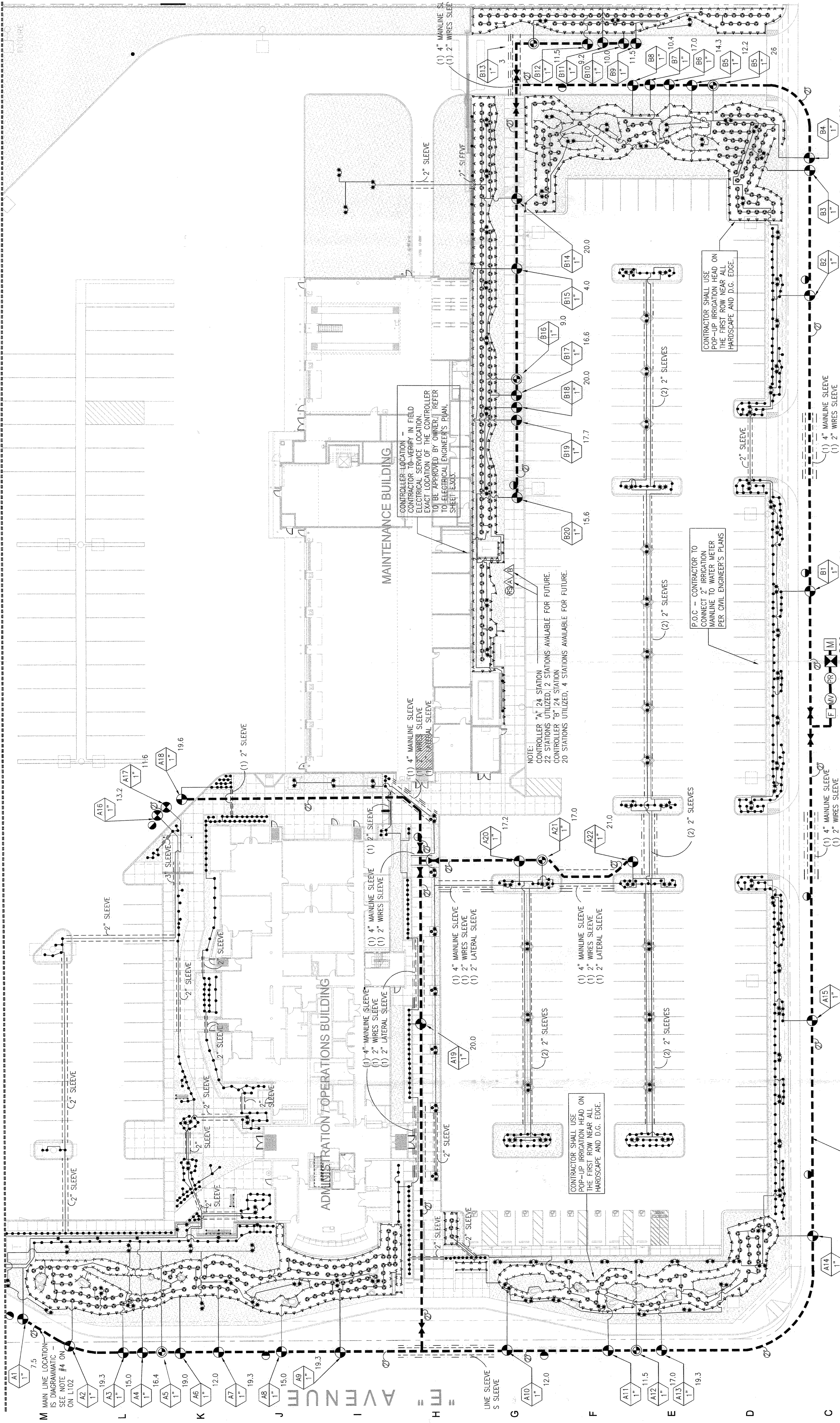
**EXHIBIT 2**

**Original Hesperia Site  
Plans**



1 2 3 4 5 6 7 8 9 10 11 12 13 14 15 16 17 18

MATCHLINE SEE SHEET L102



SMOKE TREE STREET

NOTE TO CONTRACTOR:  
1. CONTRACTOR SHALL PLANT 5-15 GALLON "MYRTUS COMMUNIS" SHRUBS AROUND BACKFLOW TO SCREEN EXACT LOCATION SHALL BE DETERMINED IN THE FIELD.  
2. IRRIGATION METER WILL BE INSTALLED BY OTHERS.

CONTRACTOR SHALL USE POP-UP IRRIGATION HEAD ON THE FIRST ROW NEAR ALL HARDSCAPE AND D.G. EDGE.

P.O.C. - CONTRACTOR TO CONNECT 2" IRRIGATION MAINLINE TO WATER METER PER CIVIL ENGINEER'S PLANS

CONTRACTOR SHALL USE POP-UP IRRIGATION HEAD ON THE FIRST ROW NEAR ALL HARDSCAPE AND D.G. EDGE.

CONTROLLER LOCATION - IN FIELD. CONTRACTOR TO DETERMINE EXACT LOCATION OF THE CONTROLLER TO BE APPROVED BY OWNER. REFER TO ELECTRICAL ENGINEER'S PLAN, SHEET E300.

NOTE:  
CONTROLLER "A" 24 STATION 22 STATIONS UTILIZED, 2 STATIONS AVAILABLE FOR FUTURE.  
CONTROLLER "B" 24 STATION 20 STATIONS UTILIZED, 4 STATIONS AVAILABLE FOR FUTURE.

VICTOR VALLEY TRANSIT AUTHORITY  
ADMINISTRATION, OPERATIONS AND MAINTENANCE FACILITY  
INTERSECTION OF "E" AVENUE AND SMOKE TREE STREET  
HESPERIA, CALIFORNIA

ISSUED FOR  
CONSTRUCTION  
AUGUST 17, 2009

RNL DESIGN, ARCHITECT  
HUITT-ZOLLARS, STRUCTURAL ENGINEER  
HUITT-ZOLLARS, CIVIL ENGINEER  
LYNN CAPUZZA, INC., LANDSCAPE ARCHITECT  
RNL DESIGN, INTERIOR DESIGN  
HUITT-ZOLLARS, MECHANICAL ENGINEER  
HUITT-ZOLLARS, ELECTRICAL ENGINEER  
MAINTENANCE DESIGN GROUP, MAINTENANCE DESIGN



Lynn Capuza, Inc.  
LANDSCAPE ARCHITECTS  
17992 KITCHEN L. SOUTH • HESPERIA, CA 92344 • (951) 756-0130



100% CD	PLAN CHECK	APRIL 24, 2009
100% CD	FEBRUARY 18, 2009	
100% SUBMITTAL	JANUARY 5, 2009	
90% SUBMITTAL	OCTOBER 21, 2008	
OC	OCTOBER 2, 2008	
CD ANALYSIS	SEPTEMBER 12, 2008	
CD 60%	AUGUST 30, 2008	
DESIGN DEVELOPMENT	JUNE 30, 2008	
NO	REVISIONS/ISSUANCE	DATE
PROJECT No.: 1021-2281-04		
DATE: DECEMBER 24, 2008		
SCALE: 1"=20'-0"		

NOTE:  
SEE IRRIGATION LEGEND & NOTES  
ON SHEET L102 & IRRIGATION DETAILS  
ON SHEET L501.

IRRIGATION PLAN

L101

1 2 3 4 5 6 7 8 9 10 11 12 13 14 15 16 17 18

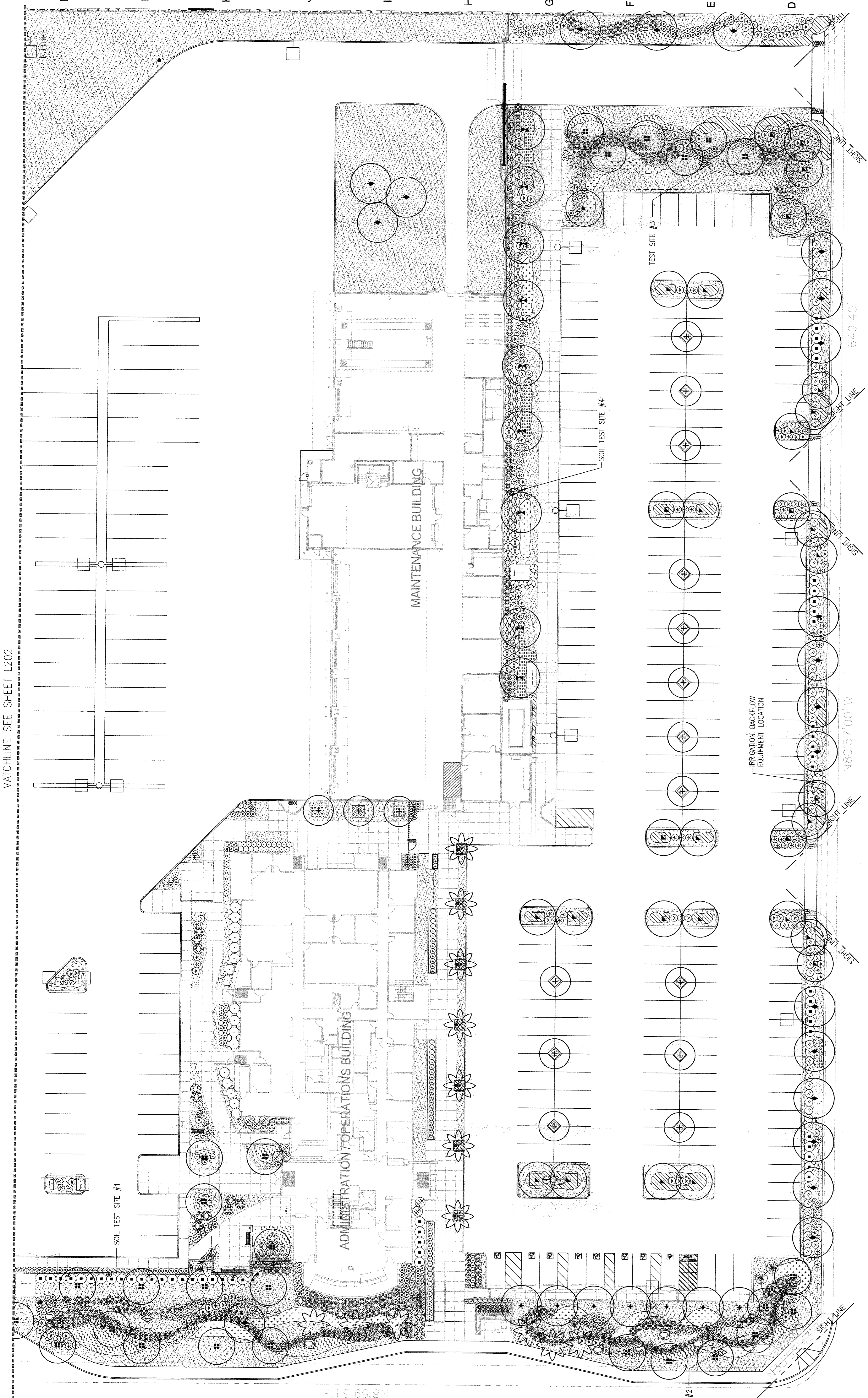






1 2 3 4 5 6 7 8 9 10 11 12 13 14 15 16 17 18

N M L K J I H "E" AVENUE G F E D C B A



MATCHLINE SEE SHEET L202

"E" AVENUE

N8°59'34"E

SOIL TEST SITE #2

SOIL TEST SITE #4

TEST SITE #3

IRRIGATION BACKFLOW EQUIPMENT LOCATION

N80°57'00"W

649.40'

SMOKE TREE STREET



NOTE:  
SEE PLANTING LEGEND  
& NOTES ON SHEET L202.

PLANTING PLAN

1

2

3

4

5

6

7

8

9

10

11

12

13

14

15

16

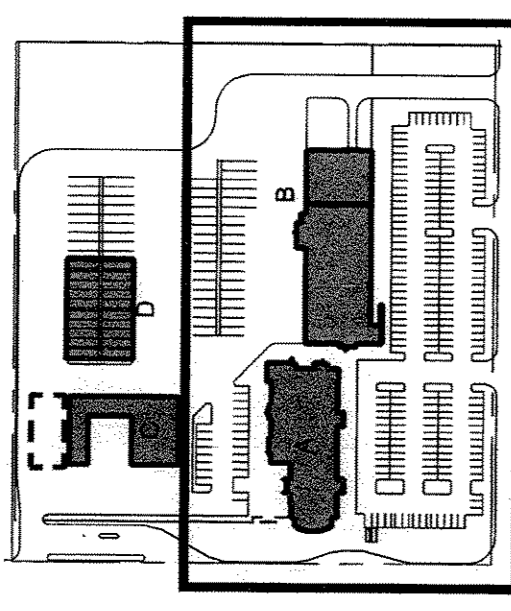
17

18

L201

VICTOR VALLEY TRANSIT AUTHORITY  
ADMINISTRATION, OPERATIONS AND MAINTENANCE FACILITY  
INTERSECTION OF "E" AVENUE AND SMOKE TREE STREET  
HESPERIA, CALIFORNIA

ISSUED FOR  
CONSTRUCTION  
AUGUST 17, 2009



100% CD PLANCHART	APRIL 24, 2009
100% CD	FEBRUARY 18, 2009
100% SUBMITTAL	JANUARY 5, 2009
90% SUBMITTAL	OCTOBER 21, 2008
CC	OCTOBER 2, 2008
COST ANALYSIS	SEPTEMBER 12, 2008
CD 60%	AUGUST 30, 2008
DESIGN DEVELOPMENT	JUNE 30, 2008
NO REVISIONS	DATE
PROJECT No:	1021-2291-04
DATE:	DECEMBER 24, 2008
SCALE:	1"=20'-0"

**Lynn Capouya, Inc.**  
LANDSCAPE ARCHITECTS  
17902 MITCHELL BOOTH • HUNTINGTON, CA 95048 • (916) 756-0150

**Maintenance Design Group**  
HUNT-ZOLLARS, CIVIL ENGINEER  
HUNT-ZOLLARS, STRUCTURAL ENGINEER  
HUNT-ZOLLARS, MECHANICAL ENGINEER  
HUNT-ZOLLARS, ELECTRICAL ENGINEER  
HUNT-ZOLLARS, MAINTENANCE DESIGN

**LANDSCAPE ARCHITECTS**  
STATE OF CALIFORNIA  
LANDSCAPE ARCHITECT  
12/23/2010  
12/23/2010  
12/23/2010





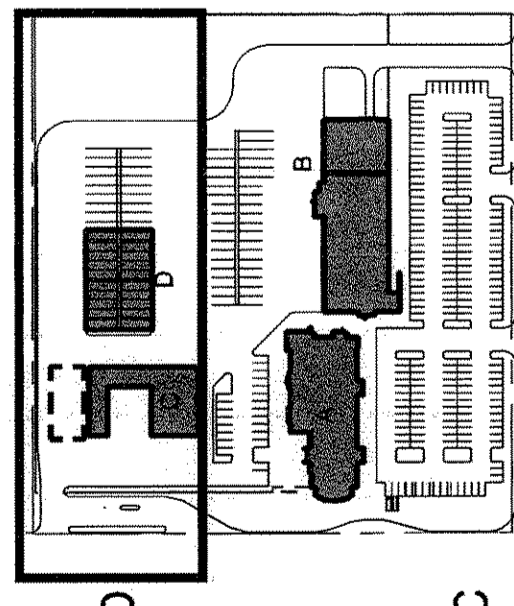
LYNN CAPOVILLA, INC.  
LANDSCAPE ARCHITECTS

17902 MITCHELL, SOUTH • HEATH • IRVINE, CA 92614 • (949) 756-0190

RNL DESIGN, ARCHITECT  
HUITT-ZOLLARS, STRUCTURAL ENGINEER  
HUITT-ZOLLARS, CIVIL ENGINEER  
LYNN CAPOVILLA, INC., LANDSCAPE ARCHITECT  
RNL DESIGN, INTERIOR DESIGN  
HUITT-ZOLLARS, MECHANICAL ENGINEER  
HUITT-ZOLLARS, ELECTRICAL ENGINEER  
MAINTENANCE DESIGN GROUP, MAINTENANCE DESIGN

VICTOR VALLEY TRANSIT AUTHORITY  
ADMINISTRATION, OPERATIONS AND MAINTENANCE FACILITY  
INTERSECTION OF "E" AVENUE AND SMOKE TREE STREET  
HESPERIA, CALIFORNIA

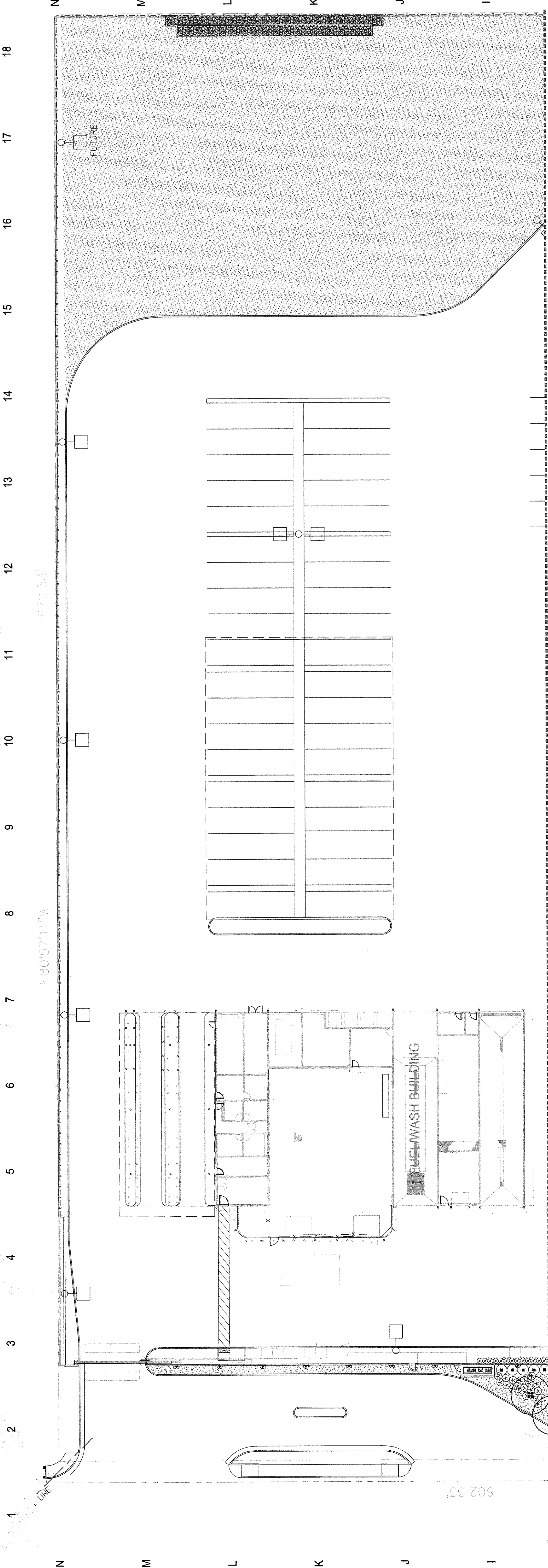
ISSUED FOR  
CONSTRUCTION  
AUGUST 17, 2009



100% CD PLAN CHECKED BY: [Signature] APRIL 24, 2009  
100% CD SUBMITTAL: [Signature] FEBRUARY 18, 2009  
90% SUBMITTAL: [Signature] JANUARY 5, 2009  
90% SUBMITTAL: [Signature] OCTOBER 21, 2008  
OC: [Signature] OCTOBER 2, 2008  
COST ANALYSIS: [Signature] SEPTEMBER 12, 2008  
CD 80% DESIGN DEVELOPMENT: [Signature] AUGUST 30, 2008  
CD 80% DESIGN DEVELOPMENT: [Signature] JUNE 30, 2008  
NO. 15070  
PROJECT NO.: 1021289-04  
DATE: DECEMBER 24, 2008  
SCALE: 1"=20'-0"

PLANTING PLAN

L202



NOTE:  
BOULDERS TO BE 'CRESTA' BY SOUTHWEST BOULDER & STONE  
© (760) 451-3333 OR WWW.SOUTHWESTBOULDER.COM OR EQUAL.  
CONTRACTOR SHALL SUBMIT SAMPLES AS PER SPECIFICATIONS.

- GENERAL PLANTING NOTES:
1. VERIFY LOCATION AND DEPTH OF ALL UNDERGROUND UTILITIES PRIOR TO START OF WORK.
  2. AFTER IRRIGATION SYSTEM INSTALLATION AND FINISH GRADES HAVE BEEN ESTABLISHED, PERFORM WEED CONTROL AS RECOMMENDED IN THE SPECIFICATIONS AND APPROVE ALL PLANTING MATERIALS AND BOX MATERIALS AT THE NURSERY PRIOR TO PLANTING.
  3. SPECIMEN AND BOX MATERIALS SHALL HAVE THE OPPORTUNITY TO INSPECT ALL PLANT MATERIALS AT THE JOB SITE PRIOR TO PLANTING.
  4. LANDSCAPE ARCHITECT SHALL BE RESPONSIBLE FOR ALL THEFT OR DAMAGE TO PLANT MATERIALS ONCE PLANT MATERIAL IS DELIVERED TO THE JOB SITE.
  5. UPON COMPLETION OF PLANTING, THE CONTRACTOR SHALL ARRANGE FOR A SUBSTANTIAL DISCREPANCY FOUND PRIOR TO FINAL INSPECTION AND ACCEPTANCE OF THE PROJECT.
  6. REFER TO SPECIFICATIONS FOR FURTHER INFORMATION ON THE GENERAL REQUIREMENTS FOR THE STOCK SUPPLIER SHALL REMAIN ATTACHED TO THE PLANTS UNTIL FINAL INSPECTION.
  7. FINISH GRADE IN ALL PLANTER AREAS SHALL BE 2 INCHES BELOW FINISH SURFACE OF SURROUNDING HARDSCAPE AND OR UTILITY BOXES.
  8. INSTALL A 4 INCH LAYER OF DECOMPOSED GRANITE IN ALL NEWLY PLANTED AREAS UPON COMPLETION OF PLANTING. REFER TO SPECIFICATIONS. DECOMPOSED GRANITE SHALL BE CONTINUOUS UNDER ALL SHRUBS THROUGHOUT THE PROJECT SITE.
  9. WHERE IT IS OBVIOUS IN THE FIELD THAT CONDITIONS DEVIATE FROM WHAT IS INDICATED ON THE PLANS, IT IS THE RESPONSIBILITY OF THE CONTRACTOR TO NOTIFY THE LANDSCAPE ARCHITECT IMMEDIATELY. THE CONTRACTOR SHALL ASSUME ALL RESPONSIBILITY FOR ANY NECESSARY REVISIONS.
  10. THE CONTRACTOR SHALL VERIFY ALL DIMENSIONS AND CONDITIONS AT THE JOB SITE PRIOR TO STARTING WORK.
  11. AFTER ALL WORK INDICATED ON THE DRAWINGS OR HEREIN SPECIFIED HAS BEEN COMPLETED, INSPECTED AND APPROVED BY THE LANDSCAPE ARCHITECT, THE CONTRACTOR SHALL MAINTAIN ALL PLANTED AREAS BY MEANS OF CONTINUOUS WATERING, WEEDING, CULTIVATING, SPRAYING, MULCHING, TRIMMING, EDGING, AND/OR ANY OTHER OPERATION NECESSARY FOR THEIR CARE AND UPKEEP FOR A PERIOD OF NINETY (90) CALENDAR DAYS AFTER AFOREMENTIONED APPROVALS, EXCEPT THAT THE MAINTENANCE PERIOD SHALL BE EXTENDED TO INCLUDE THE TIME NECESSARY TO MEET THE REQUIREMENTS AND APPROVAL OF THE CITY OF HESPERIA.
  12. ALL TREES WHEN THE TREE TRUNK IS 5' OR LESS SHALL BE PROTECTED BY A TREE PROTECTION BARRIER. THE BARRIER SHALL BE 18" HIGH, 2" THICK, AND SHALL BE CONSTRUCTED OF ASPHALT, CONCRETE SURFACE, WALL OR FENCE-SEE DETAIL C, L502.
  13. ALL SIGHT LINE DISTANCES SHALL BE MEASURED ACCORDING TO CITY OF HESPERIA MUNICIPAL CODE CHAPTER 12.08.030 'INTERSECTION DESIGN STANDARDS' PARAGRAPHS G & H. SEE DETAIL H ON SHEET L502.
  14. DECOMPOSED GRANITE SHALL BE PROPERLY MAINTAINED TO PROVIDE 100% COVERAGE AT ALL TIMES.

MATCHLINE SEE SHEET L201

SYMBOL	BOTANICAL NAME COMMON NAME	QUANTITY	SPACING	DETAILS/ REMARKS
⊗	FOUQUERIA SPLENDENS OCOTILLO	8	15 GAL.	SHEET L502, DETAIL D 5'-0" O.C.
⊙	HELIOTRICHON SEMPERVIRENS BLUE OAT GRASS	265	1 GAL.	SHEET L502, DETAIL D 2'-6" O.C.
⊕	LEUCOPHYLLUM F. 'GREENCLOUD' TEXAS RANGER	58	5 GAL.	SHEET L502, DETAIL D 5'-0" O.C.
⊖	MYRTUS COMMUNIS 'COMPACTA' MYRTLE	56	5 GAL.	SHEET L502, DETAIL D 2'-6" O.C.
⊗	MYRTUS COMMUNIS MYRTLE	12	15 GAL.	SHEET L502, DETAIL D 4'-0" O.C.
⊙	PENINSETUM ORIENTALE FOUNTAIN GRASS	100	5 GAL.	SHEET L502, DETAIL D 2'-6" O.C.
⊕	PENINSETUM SETACEUM 'RUBRUM' FOUNTAIN GRASS	266	1 GAL.	SHEET L502, DETAIL D 3'-6" O.C.
⊖	ROSMARINUS OFF. 'PROSTRATUS' PROSTRATE ROSEMARY	423	1 GAL.	SHEET L502, DETAIL D 3'-6" O.C.
⊗	SANTOLINA CHAMACEPARISSUS LAVENDER COTTON	12	1 GAL.	SHEET L502, DETAIL D 3'-0" O.C.
⊕	BOTANICAL NAME COMMON NAME	QUANTITY	SPACING	DETAILS/ REMARKS
GROUND COVER:				
⊗	ARTEMISA CAUCASICA SILVER SPREADER	423 (950 SQ. FT.)	18"-0" O.C.	SHEET L502, DETAIL E
⊙	DALEA GREGGII TRAILING INDIGO BUSH	500 (2,000 SQ. FT.)	24"-0" O.C.	SHEET L502, DETAIL E
⊕	COTONEASTER DAMERI BEARBERRY COTONEASTER	538 (2,150 SQ. FT.)	24"-0" O.C.	SHEET L502, DETAIL E
⊖	HYPERICUM CALYCONUM AARON'S BEARD	578 (1,300 SQ. FT.)	18"-0" O.C.	SHEET L502, DETAIL E
⊗	VINES: MACFADAYENA UNICUIS-CATI CAT'S CLAW	15	15 GAL.	SHEET L502, DETAIL F

NOTE:  
AGRONOMICS SOIL TESTING SHALL BE PERFORMED ON THE SITE FROM LOCATIONS INDICATED. FOUR (4) TESTING SITES HAVE BEEN IDENTIFIED AND ALL RESULTS SHALL BE INCORPORATED INTO THE WORK ON THIS PROJECT.

— INDICATES SAMPLE SITE  
— SOIL SAMPLES SHALL BE SENT TO:  
WALLACE LABORATORIES  
365 CORAL CIRCLE  
EL SEGUNDO, CA 90245  
310-615-0116  
ATTN: GARY WALLACE

— TESTING TO BE PERFORMED SHALL BE DETERMINED BY WALLACE LABORATORIES. REPORT IS TO BE OBTAINED AND PAID FOR BY THE CONTRACTOR.  
— REFER TO THE WALLACE LABORATORIES WEBSITE (WWW.BETTERSOLS.COM) FOR SOIL COLLECTION PROCEDURES OR CONTRACTOR MAY CONTACT THE LABORATORY TO OBTAIN THE SAMPLES.

PLANTING LEGEND — VICTOR VALLEY TRANSIT AUTHORITY

SYMBOL	BOTANICAL NAME COMMON NAME	SIZE	QUANTITY	DETAILS/ REMARKS
⊙	ARBUTUS UNEDO STRAWBERRY TREE	24" BOX	31	SHEET L502, DETAIL A
⊖	CHILLOPSIS LINEARIS DESERT WILLOW	24" BOX	9	SHEET L502, DETAIL A
⊕	CHITALPA TASHKENTENSIS CHITALPA	24" BOX	7	SHEET L502, DETAIL A
⊖	LAGERSTROMIA 'NATCHEZ' GRAPE MYRTLE	24" BOX	17	SHEET L502, DETAIL A
⊗	PARKINSONIA ACULEATA MEXICAN PALO VERDE	24" BOX	28	SHEET L502, DETAIL A
⊕	PROSOPIS GLANDULOSA TEXAS MESQUITE	24" BOX	20	SHEET L502, DETAIL A
⊙	WASHINGTONIA FILIFERA CALIFORNIA FAN PALM	16" BTH (FIELD GROWN)	13	SHEET L502, DETAIL B
⊖	BOTANICAL NAME COMMON NAME	SIZE	QUANTITY	DETAILS/ REMARKS
SHRUBS:				
⊙	AGAVE AMERICANA CENTURY PLANT	15 GAL.	21	SHEET L502, DETAIL D 5'-0" O.C.
⊖	CASUALPINIA GILLESII DESERT BIRD OF PARADISE	5 GAL.	8	SHEET L502, DETAIL D 6'-0" O.C.
⊕	CALLUNDA CALIFORNICA BLACK FERRY DUSTER	5 GAL.	17	SHEET L502, DETAIL D 5'-0" O.C.
⊖	CERASTIUM TOMENTOSUM SNOW-IN-SUMMER	1 GAL.	310	SHEET L502, DETAIL D 2'-6" O.C.
⊙	CISTUS CORBARENIS WHITE ROCKROSE	5 GAL.	88	SHEET L502, DETAIL D 4'-0" O.C.
⊖	CISTUS X PURPUREUS ORCHID ROCKROSE	5 GAL.	76	SHEET L502, DETAIL D 4'-0" O.C.
⊗	DIETES IRIDIODES FORTNIGHT LILY	1 GAL.	55	SHEET L502, DETAIL D 2'-6" O.C.

SYMBOL:	SIZE IN DIA.	QUANTITY	DETAILS/REMARKS
⊙	3"	6	SEE DETAIL G, SHEET L-502
⊖	4"	6	-
⊕	5"	10	-







1 2 3 4 5 6 7 8 9 10 11 12 13 14 15 16 17 18

N

M

L

K

J

I

H

G

F

E

D

C

B

A



LYNN CAPOVILLA, INC. LANDSCAPE ARCHITECTS  
17902 MITCHELL ROAD • BAYVIEW, CA 94026 • (415) 755-0190  
RNL DESIGN, ARCHITECT  
HUTT-ZOLLARS, CIVIL ENGINEER  
HUTT-ZOLLARS, MECHANICAL ENGINEER  
HUTT-ZOLLARS, ELECTRICAL ENGINEER  
MAINTENANCE DESIGN GROUP, MAINTENANCE DESIGN

VICTOR VALLEY TRANSIT AUTHORITY  
ADMINISTRATION, OPERATIONS AND MAINTENANCE FACILITY  
INTERSECTION OF "E" AVENUE AND SMOKE TREE STREET  
HESPERIA, CALIFORNIA  
ISSUED FOR CONSTRUCTION  
AUGUST 17, 2009

100% CD PLAN CHECK 3 APRIL 24, 2009  
100% CD FEBRUARY 18, 2009  
100% SUBMITTAL JANUARY 8, 2009  
90% SUBMITTAL OCTOBER 27, 2008  
OC OCTOBER 2, 2008  
CD ANALYSIS SEPTEMBER 12, 2008  
CD 60% AUGUST 30, 2008  
DESIGN DEVELOPMENT JUNE 30, 2008  
NO REVISIONS SUBMISSION DATE  
PROJECT No.: 1021-2291-04  
DATE: DECEMBER 24, 2008



A PLANTING DETAILS

L502

G BOULDER PLACEMENT			D SHRUB PLANTING			A TREE PLANTING			NTS		

5 6 7 8 9 10 11 12 13 14 15 16 17 18

# EXHIBIT 3

Company Name	Address	Phone	Fax	Representative Name	Signature	Email Address
VVTA	17150 Smoke Tree Hesperia 92345	152	760-948-1320	Christine Planting		cplanting@vvta.org
Daniels Affordable Landscaping	18353 Main St Hesperia CA 92345	760-684-2025		Daniel Concepcion		danielsAffordable 55@yahoo.com
VVTA	17150 Smoke Tree Hesperia 92345	138		Dustin Strandberg		dstrandberg @VVTA.org
VVTA.	Hesperia. 17150 Smoke Tree	118		Ron Zirkas	Ron Zirkas	rzirkas@ VVTA.org.



[illegible]