

VVTA IFB 2020-04 BUS STOP SHELTERS AND AMENITIES ADDENDUM NO. 1

Thursday, June 4, 2020

This addendum is provided to all known prospective proposers for clarification of the subject Request for Proposal (RFP).

The following are questions received prior to the deadline for questions on Friday, May 29, 2020, at 5:00 PM (PDT) and the responses from VVTA Staff:

Q1: "Will you be offering a call-in option for the pre-bid meeting scheduled for Tuesday May 20?"

A1: As you already know, this meeting was canceled. There were some technical difficulties that VVTA was unable to overcome to allow this meeting to happen. We apologize for any inconvenience.

Q2: "Is bonding required?"

A2: No

Q3: "When are submittals for approved equals due?"

A3: Please include them with your proposals. The Evaluation Committee will review.

Q4: "...Can you share details about your previous purchases?"

A4: The quantities on the Scope of Work and the Price Form (in Attachment F) include the quantities VVTA has purchased during the past 5 years.

Q5: "Please share a spec sheet of one of your previously purchased shelters from Tolar so we can match that product exactly."

A5: The information requested can be found on the Tolar website.

Q6: "Would you like the shelter to be 3 sided with the front completely left open? Or will it need to be 4 sided with an opening on one side?"

A6: Please review the IFB package, which includes photos of some of the frequently purchased shelters by VVTA.

Q7: "Would you like our standard 3" thick panelized sloped roof panel with a 4" overhang? Or perhaps a hip roof?"

A7: VVTA purchases a variety of Room panels. Please review the IFB package for this information.

VVTA IFB 2020-04 BUS STOP SHELTERS AND AMENITIES

ADDENDUM NO. 1

Q8: "Would you like our standard full-length tempered glass windows on all sides?"

A8: Please review the IFB package for the model of glass frequently purchased by VVTA. VVTA will review options that are considered equal to what was specified.

Q9: "Will a bench be required along the back wall? Our standard is stainless steel unless you prefer aluminum or wood?"

A10: Please review the IFB package to the types of benches VVTA has purchased in the past.

Q11: "Would you like our standard 7-1/2" air space at the bottom as shown in the attached info sheet?"

A11: Please review the specifications included in the IFB package.

Q12: "Would you like Solar Lighting?"

A12: VVTA does procure solar lighting when ordering the Bus stop shelters. Please review the IFB package regarding the specifications.

Q13: "Are you interested in an Ad Panel? Single-sided or Double-sided? Lighted?"

A13: VVTA does currently purchase shelters with or without Ad panels. Most are single-sided. Please review the IFB package for details.

Q14: "Would you like a map case?"

A14: VVTA does purchase map cases, but not as part of this IFB.

Q15: "What type of trash cans smoking/non-smoking receptacles?"

A15: Please review the specifications.

Q16: "Do you have specs or drawings?"

A16: Drawings and pictures are included with this addendum.

Q17: "The bid sheet, Attachment F pages 3 and 4, lists estimated quantities. Does VVTA have an estimate regarding how many of each item they may purchase at a time? These items, in most cases, are made to order and the costs to build one unit is

VVTA IFB 2020-04 BUS STOP SHELTERS AND AMENITIES

ADDENDUM NO. 1

significantly more expensive than building multiples such as 3, 6 or 12 of an item. If there is no direction, the respondents will have to assume a quantity of one when preparing the bid response.”

A17: As stated on the Bid form, it states that the quantities are from historical data. VVTA is currently working with one of our jurisdictions for additional shelters; however, the quantity has not been finalized. VVTA understands that pricing is sometimes determined by the quantity ordered; however, VVTA does not know how many shelters it will order in the future. ***Please provide pricing based on 1 item per all lines so all bidders are bidding the same quantity.***

Q18: “This is a 10 year contract with options. Is our price to be firm for 10 years, or can we propose adjustments, if any, based on the producers price index issued by the United States Department of labor for Fabricated Structural Metal Products (Series ID WPS107) or other method.”

A18: VVTA will negotiate a price escalation/de-escalation contract clause with the awarded bidder.

Q19: “How are freight costs to be addressed in the bid response? It is difficult to add freight to each item, because in many cases you can transport 3 shelters for the same price as 1 to Hesperia. Are the products to be delivered to VVTA or to your member entities?”

A19: Freight costs are not being evaluated as part of the bid submission.

Q20: “Scope of Work, Attachment A Page 15 Backed Bench Option-a steel strap bench (12716) is discussed, but in the bid the bench is described as perforated metal with a back (14001)...”

A20: For the purpose of this bid, please indicate pricing for the items listed.

Q21: “There is not a lot of description of the PV Stop shown in Attachment F Page 4 Line 18. We ask VVTA to consider the item described in our attached request.”

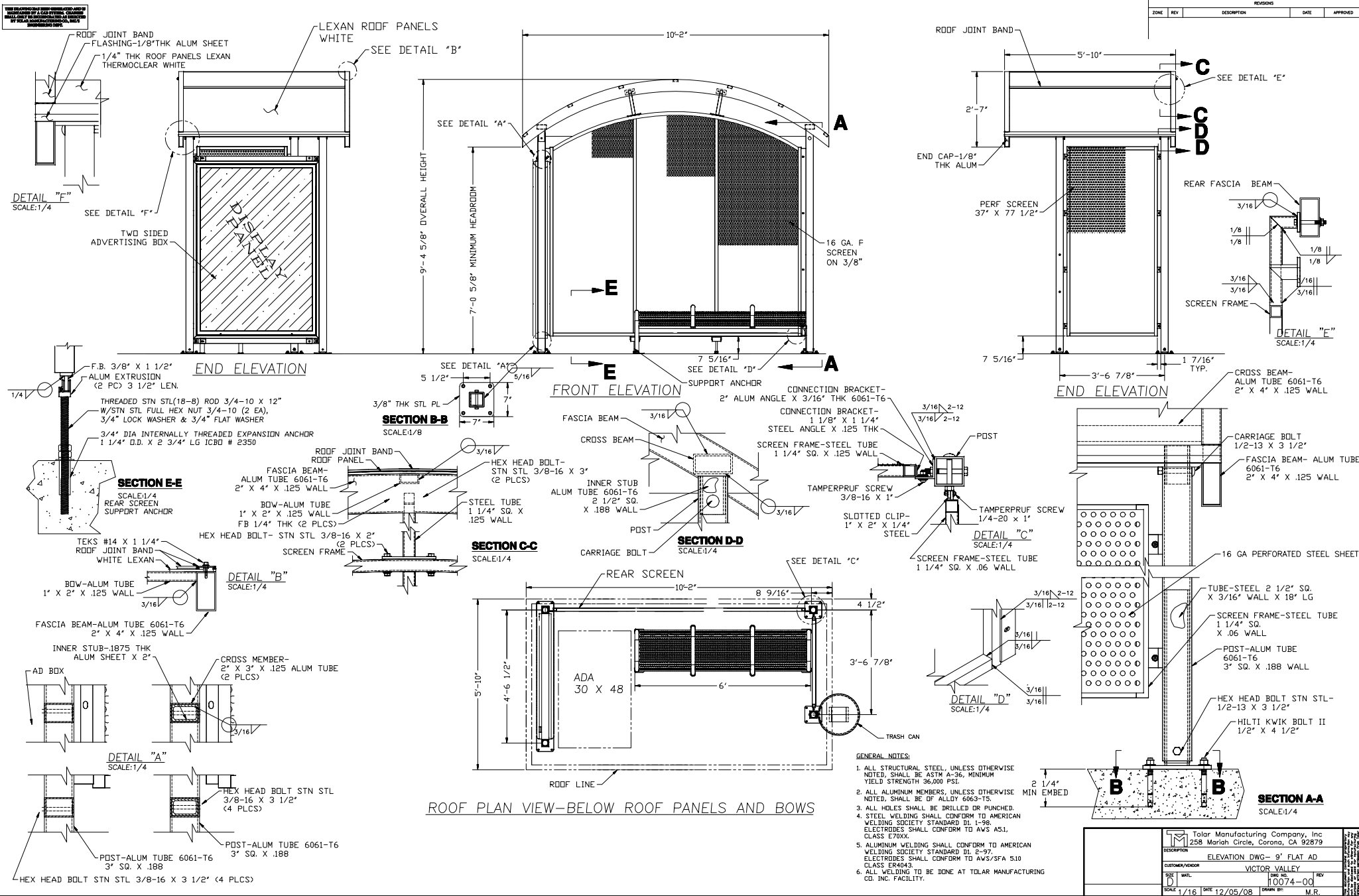
A21: VVTA is considering items that are considered “or equal.” These will be evaluated during the review of bids by staff.

The Public Bid Opening is still scheduled for Thursday, June 11, 2020, at 3:00 PM Pacific Time at 17150 Smoke Tree Street, Hesperia, CA 92345, Room A104 – The Board Room. Currently, VVTA does not intend to include a Zoom meeting for this opening. Bidders are not required to attend. However, if Bidders attend the Bid Opening, VVTA asks that they wear a face covering and practice Social Distancing during the meeting.

VVTA IFB 2020-04 BUS STOP SHELTERS AND AMENITIES ADDENDUM NO. 1

All other terms and conditions of the IFB remain the same.

As stated in the IFB, all addenda must be acknowledged. Please use Attachment G of the IFB to acknowledge receipt of this addendum. Failure to acknowledge any addenda to this IFB may be cause to deem Bidder "Non-Responsive."

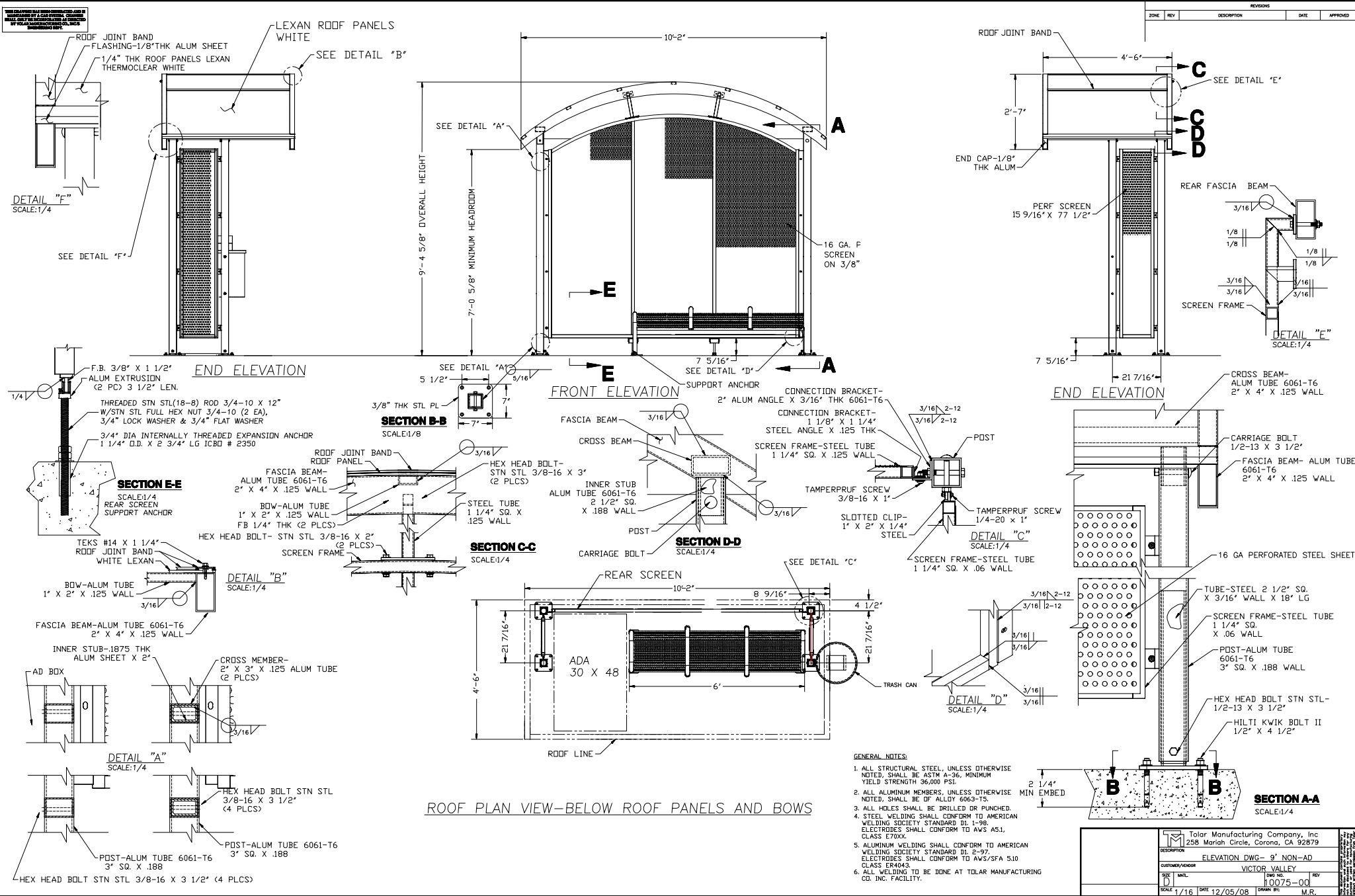


REVISIONS				
ZONE	REV	DESCRIPTION	DATE	APPROVED

Tolar Manufacturing Company, Inc 258 Mariah Circle, Corona, CA 92679				
DESCRIPTION ELEVATION DWG- 9' FLAT AD				
CUSTOMER/VENDOR VICTOR VALLEY				
DATE 12/07/04	DWG NO. 0074-00	REV		
SCALE 1/16	DATE 12/05/08	DRAWN BY M.R.		

THIS DRAWING HAS BEEN CONSIDERED AND IS
MAINTAINED BY A CAD SYSTEM. CHANGES
SHALL ONLY BE INCORPORATED AS DIRECTED
BY SOLAS MANUFACTURING CO., INC.'S
ENGINEERING DEPT.





REVISIONS				
ZONE	REV	DESCRIPTION	DATE	APPROVED

Tolar Manufacturing Company, Inc 258 Mariah Circle, Corona, CA 92679				
DESCRIPTION ELEVATION DWG- 9' NON-AD				
CUSTOMER/VENDOR VICTOR VALLEY				
SIZE D	DATE 12/05/08	DWG NO. 10075-00	REV	
SCALE 1/16	DATE 12/05/08	DRAWN BY M.R.		





THE BETTER CHOICE
Lower cost. Local benefit.
Learn more at...
www.AVChoiceEnergy.com
760-573-AVCE 2823



BUS STOP 30228
2





BUS
STOP 50323

42	Southwest
43	Northwest
50	East
53	West
55	Central

NO SMOKING
PENITENTIARY VIOLATION 1000 & 1001

NO LOITERING
P.C. 64700

NO PANHANDLING
P.C. 64710

Blank sign area




MIRUS
SECONDARY SCHOOL
Free Public School
Grades 7-12
2 Hesperia Locations
ENROLL TODAY!
www.MirusCharter.com









NO SMOKING
ACTIVELY MONITORING CODE 647161
NO LOITERING
P.C. 647161
NO PANHANDLING
P.C. 647161